



PennState

Environmental Health and Safety

**Deike Building
Emergency Evacuation Plan
Penn State University**

Emergency Phone Numbers

EMERGENCY (Police-Fire-Ambulance) 911

University Police 814-863-1111

University Health Services 814-865-6556

Environmental Health and Safety (814) 865-6391

Physical Plant Work Reception Center 814-865-4731

The Pennsylvania State University Emergency Evacuation Plan

Building and Personnel Information

Building Name: **Deike**

Department Name(s): **EMS Admin, EMS Student Center, Geosciences, EMS Library, EMS Helpdesk, EMS Museum**

Position	Name	Area of Responsibility	Phone Office/Cell	Office Address
Building/Department Emergency Coordinator	Dennis Walizer	Deike	863-2023 360-4952	227 Deike Bldg
Alternate Building/Department Emergency Coordinator	Jacob Hoover	Deike	865-7791	542 Deike Bldg
Unit Safety Officer	Frank Driscoll	College of EMS	865-5709	248 Deike Bldg
Unit Alternate Safety Officer	Diane Ault	College of EMS	865-7659	248 Deike Bldg
Safety Monitors	Steve Swavely	5th-8th Floor	865-1527	509 Deike Bldg
	Amy Homan		865-2622	505 Deike Bldg
	Kyle Homman	4th Floor	863-8341	444 Deike Bldg
	Loren Newman		867-4760	503 Deike Bldg
	Stacie Hugney	3rd Floor	865-4203	506 Deike Bldg
	Jo Ann Lehtihet		865-7394	543 Deike Bldg
	Allie Baczynski	2nd Floor	863-4426	218 Deike Bldg
	Heike Betz		863-4426	218 Deike Bldg
	Dean's Area No Occupants (Under construction)	1st Floor		
	Elizabeth Long (or current desk staff)	Library Alternate - Library	865-3720	105 Deike Bldg
	Linda Spangler	Ground Floor	863-5517	14 Deike Bldg
	Denny Walizer	Basement	863-2023	227 Deike Bldg

Designated Meeting Site(s) for Building are: **East ramp at IST Building**

Designated Areas of Refuge for the Building are: **Stairways at North and South ends of Deike Building**

Copies of this Evacuation Plan are kept in the following locations: **227 Dieke Building**

Door Monitors **Lobby Main Entrance** ----- Steve Swavely and Amy Homan
South Entrance----- Kyle Homman and Loren Newman
Parking Lot Entrance----- Stacie Hugney and Jo Ann Lehtihet
Ground Floor Hosler Entrance -----Elizabeth Long and/or (Current Desk staff person)
Second Floor Hosler Entrance – Allie Baczynski and Heike Betz
Perimeter Checkers -----Dennis Walizer and Jacob Hoover

Critical Operations Shut Down Procedures and Personnel Assigned These Responsibilities:

(A) Museum area should be secured on Ground Floor:

- 1) See that ALL persons are evacuated from room 6 and 18.
- 2) Close the overhead cage in room 6.
- 3) Lock the doors in room 6.
- 4) Proceed to the designated meeting site.

Emergency contact information for procedure (C):

Juilanne Snider

Associate Professor / Museum Director

Museum: 6 Deike

Office: 814-571-6317

Note: During times of limited building occupancy..... available personnel should take charge of evacuation procedures and communicate with other available personnel to perform building sweeps and door monitor positions.

Critical Operations Shut Down Procedures and Personnel Assigned These Responsibilities: (A) museum area should be secured on Ground Floor:

- 1) See that ALL persons are evacuated from Museum Area.
- 2) Secure Museum area and lock doors.
- 3) Proceed to the designated meeting site.

Emergency contact information for procedure (C): Julianne Snider

Museum Director Museum: Ground Floor Deike

Phone: 814-571-6317

Updated 04/26/2022

Work Unit Employee Lists

Building	Room #	Last Name	First Name	Affiliation
Deike	14	Richardson	Yvette	Assoc. Dean
Deike	14	Kimble	Heather	Staff
Deike	14	Spangler	Linda	Staff
Deike	14	Gordon	Michael	Staff
Deike	14	Fleck	Kevin	Staff
Deike	14	Davidson	Stacy	Staff
Deike	14	Nelson	Philip	Staff
Deike	14	Himes	Hilleary	Staff
Deike	14	Marosi	Karen	Staff
Deike	14	McCandless	Jane	Staff
Deike	14	Math Instructor	TBA	Staff
Deike	104	Sanchez	Victoria	Assoc. Dean
Deike	104	Robinson	Lori	Staff
Deike	104	Guyton	James	Staff
Deike	105	Gowen	Elise	Staff
Deike	105	Musser	Linda	Staff
Deike	105	Long	Elizabeth	Staff
Deike	105	Procious	Aaron	Staff
Deike	105	Searfoss	James	Staff
Deike	105	Wilkins	Joshua	Staff
Deike	116			
Deike	116			
Deike	116			
Deike	116			
Deike	116			
Deike	116			
Deike	116			
Deike	116			
Deike	116			
Deike	116			
Deike	116			
Deike	116			
Deike	116			
Deike	116			
Deike	201	Varrassa	Scott	IT
Deike	203	Conference	Room	Conference Room
Deike	204			
Deike	204			

Deike	204A			
Deike	206			
Deike	207			

Deike	209			
Deike	210			
Deike	211	Macalady	Jenn	Faculty
Deike	212		Microscope Room	Lab
Deike	213	Climate	Change Seminar/Lab	Lab
Deike	214	Astrobiology Lab	Change Computation Lab	Lab
Deike	218	Myers	Kate	Staff
Deike	218	Betz	Heike	Staff
Deike	218	Baczynski	Allison	Faculty
Deike	218	Open		
Deike	218	Open		
Deike	220	Geomicrobiology		Lab
Deike	221	Geomicrobiology		Lab
Deike	222	Geomicrobiology		Lab
Deike	223	Geomicrobiology		Lab
Deike	224	Geomicrobiology		Lab
Deike	225	Geomicrobiology		Lab
Deike	226	Geomorphology	Tectonic	Lab
Deike	227	Walizer	Denny	Staff
Deike	228	Biogeochemistry		Lab
Deike	230	Biogeochemistry		Lab
Deike	231	Biogeochemistry		Lab
Deike	233	Biogeochemistry		Lab
Deike	235	Open		
Deike	235A	Conference Room	Freeman	Conference Room
Deike	235B	Freeman	Kate	Faculty
Deike	236	Hartke	Emma	Grad
Deike	236	Cleveland	Claire	Grad
Deike	236	Smith	Hillary	Grad
Deike	236	Robinette	Austin	Grad
Deike	236	Hyde	Andrew	Grad
Deike	236	Sato	Youki	Grad
Deike	236	Reinthal	Mary	Grad
Deike	236	Munoz	Ester	Grad
Deike	237	Trace	Gas Biogeochemistry	Lab

Deike	240	Classroom	Classroom	Classroom
Deike	242	Classroom	Classroom	Classroom
Deike	243			
Deike	244			

Deike	244			
Deike	244			
Deike	244			
Deike	246	Byers	Bob	IT
Deike	246	Tate	Kevin	IT
Deike	246	Bryan	Maggie	IT
Deike	248			
Deike	248			
Deike	248D			
Deike	248C			
Deike	248B			
Deike	248A			
Deike	302			IT Systems Admin
Deike	303	Hone	Samuel	Grad
Deike	303	Irizarry	Kayla	Grad
Deike	303	Shaugahnessy	Andrew	Grad
Deike	303	LaFord	Julia	Grad
Deike	303A	Shepherd	Garrett	Grad
Deike	303A	Mundell	Hailey	Grad
Deike	303A	Jahn	Kalle	Grad
Deike	303A	Garcia	Victor	Grad
Deike	305	Garber	Josh	Instructor
Deike	306	DiBiase	Roman	Faculty
Deike	307	Foley	Brad	Faculty
Deike	308	Dimaggio	Erin	Faculty/Res Assoc
Deike	309	Bice	Dave	Faculty
Deike	310	Kelley	Brian	Faculty
Deike	311	Wauthier	Christelle	Faculty
Deike	312	Wood	Clay	Grad
Deike	312	Chen	Si	Grad
Deike	312	Johnson	Sofia	Grad
Deike	312	Del Vecchio	Joanmarie	Grad
Deike	312	Barnes	Benjamin	Grad
Deike	312	Grosswiler	Kathleen	Grad
Deike	312	Ferland	Troy	Grad

Deike	312	Ji	Aoshung	Grad

Deike	313	Room/Visitor Office/TA	Conference	Faculty/ Grad
Deike	313	Gold	Duff	Emeritus Faculty
Deike	318	Spectrometry	UV/Vis	Lab/Grad
Deike	320	Computational Lab	Hydrogeology	Lab
Deike	324	Sciences-Microscopy	Mineral	Lab
Deike	326	Hydrogeology		Lab
Deike	327	Telecom	Room	Telecom
Deike	328	Conference	Room	Conference Room
Deike	329	Remote	Sensing	Lab
Deike	330	Volcanology	Tectonic	Lab
Deike	332	Smye	Andrew (Andy)	Faculty
Deike	333	Furman	Tanya	Faculty
Deike	334A	Fisher	Donald	Faculty
Deike	334	Chen	Tsai-Wei	Grad or Post Doc
Deike	335	Givens	Thomas	Grad or Post Doc
Deike	335	Cromwell	Copeland	Grad or Post Doc
Deike	335	Affinito	Raphael	Grad
Deike	335	Jonathan	Sarah	Grad
Deike	335	Youngquist	Leah	Grad
Deike	336	Chung	Dongyoun	Grad
Deike	336	Thames	Alexander	Grad
Deike	336	Rossetto-Harris	Gabriella	Grad
Deike	336	Roth	Nolan	Grad
Deike	336	Gonzalez-Santana	Judith	Grad
Deike	336	Silverhart	Perri	Grad
Deike	336	Gonzalez-Santana	Judith	Grad
Deike	336	Choi	Hee	Grad
Deike	336	Hu	Xiaoni	Grad
Deike	337	Classroom/Computer	Lab	Classroom/Lab
Deike	338	Tectonics Computing Lab	Active	Lab
Deike	339	Fantle	Matt	Faculty
Deike	340	LaFemina	Peter	Faculty

Deike	341	Classroom	Geosciences	Classroom
Deike	342	Li	Mingsong	Faculty
Deike	343	Conference Room	Geosciences	Conference Rm

Deike	402	Nyblade	Andrew	Faculty/Dept. Head
Deike	403A	Bowden	Shelby	Grad
Deike	403A	Stephens	Kirsten	Grad
Deike	403A	Connop	Charlotte	Grad
Deike	403	Contreras	Kaelie	Grad
Deike	403	McKenzie	Kirsty	Grad
Deike	403	Leapaldt	Hannah	Grad
Deike	403	Lucas	Erica	Grad
Deike	403	Benfield	Adam	Grad
Deike	403	Cipar	Jacob	Grad
Deike	405	Ohmoto	Hiroshi	Emeritus Faculty
Deike	405	Barnes	Hu	Emeritus Faculty
Deike	406	Zhu	Tieyan	Faculty
Deike	407	Lau	Kimberly	Faculty
Deike	408	Boxe	Christopher	Faculty
Deike	409	Richardson-Marone	Elizabeth	Faculty
Deike	410	Lloyd	Max	Faculty
Deike	411	Reimink	Jesse	Faculty
Deike	412	TBD		
Deike	413	Furlong	Kevin	Faculty
Deike	418	Isotopes	Stable	Lab
Deike	420	Isotopes	Stable	Lab
Deike	422	Isotopes	Stable	Lab
Deike	423	Isotopes	Stable	Lab
Deike	424	Alotaibi	Thamer	Grad
Deike	424	Geodynamics		Lab
Deike	426	Geophysics	Computational	Lab
Deike	427	Geophysics	Polar	Lab
Deike	427	Open		Lab
Deike	427	Open		Lab
Deike	428	Paleoceanography		Lab

Deike	430	Micropaleontology		Lab
Deike	431	Open		Lab
Deike	431	Lab		Lab

Deike	432	Lab		Faculty
Deike	434	Lab		Faculty
Deike	435 A	Kasting	Jim	Faculty
Deike	435	Watanabe	Yasuto	Visiting Scholar
Deike	436	TBD		
Deike	437	Chanchai	Watsawan	Grad
Deike	437	Lee	Ian	Grad
Deike	437	Higgins	Machel	Grad
Deike	437	Horisk	Katie	Grad
Deike	437	Pham	Karen	Grad
Deike	438	Leong	Zi Xian	Grad
Deike	438	Taylor	Kaitlin	Grad
Deike	438	Webster	Claire	Grad
Deike	438	Sclafani	Judi	Grad
Deike	438	Fuller	Robert	Grad
Deike	438	Ye	Haochen	Grad
Deike	439	Madara	Benjamin	Grad
Deike	439	Bolton	David	Grad
Deike	439	Pippin	James	Grad
Deike	439	Shreedharan	Srisharan (Sriran)	Grad
Deike	439	Deane	Chanel	Grad
Deike	439	Willet	Amanda	Grad
Deike	440	Ammon	Chuck	Faculty
Deike	441	TBD		
Deike	442	Petrology GroupSpace		Faculty
Deike	443	Rose	Art	EmeritusFaculty
Deike	443	Slingerland	Rudy	EmeritusFaculty

Deike	443	Gold	David	Emeritus Faculty
Deike	443	Engelder	Terry	Emeritus Faculty
Deike	443	Voigt	Barry	Emeritus Faculty
Deike	443	Eggler	Dave	Emeritus Faculty
Deike	443	Parizek	Richard	Emeritus Faculty
Deike	444	Geophysics	Computational	Lab
Deike	446	Homman	Kyle	Seismic Lab Mgr
Deike	447	Carr	Julia	Grad
Deike	447	Forgeng	Michael	Grad
Deike	447	Chen	Junzhu	Grad
Deike	447	Xing	Guangchi (Joshua)	Grad

Deike	447	Shaheen	Samuel	Grad
Deike	502	TBD		
Deike	503A	Nyblade	Andy	Dept. Head/Faculty
Deike	503	Newman	Loren	Staff
Deike	505	Homan	Amy	Staff Supervisor
Deike	506	Hugney	Stacie	Staff
Deike	507	Lehtihet	Jo Ann	Staff
Deike	508	Ingalls	Miquela	Faculty
Deike	509	Swavely	Steve	Staff
Deike	510	Lab		Lab
Deike	511	Ivory	Sarah	Faculty
Deike	512	TBD		Staff
Deike	513A	Anandakrishnan	Sridhar	Faculty
Deike	517B	Alley	Richard	Faculty
Deike	517A	Parizek	Byron	ResearchFaculty
Deike	519	Geology	Sed	Lab
Deike	520	Geology	Sed	Lab
Deike	520A	Geochemistry	Basalt	Lab
Deike	521	Mechanics	Rock	Lab
Deike	522	Rock and Sediment	Rock	Lab
Deike	524	Geology	Sed	Lab
Deike	526	Geology	Sed	Lab

Deike	529	Geology	Sed	Lab
Deike	530	Geology	Sed	Lab
Deike	532	Clyne	Elizabeth (Lizzy)	Grad
Deike	532	Schwans	Emily	Grad
Deike	532	Melton	Sierra	Grad
Deike	533	Paleobotany		lab
Deike	534	Hajek	Elizabeth	Faculty
Deike	535	TBD		
Deike	536	Marone	Chris	Faculty
Deike	537	Wilf	Peter	Faculty
Deike	538	Feinemann	Maureen	Faculty
Deike	539	Patzkowsky	Mark	Faculty
Deike	540	Heaney	Peter	Faculty
Deike	541	Conference	Geosciences	Conference Room
Deike	542	Hoover	Jacob	Staff
Deike	543	Mailroom/Copier	Geosciences	Mailroom
Deike	801			Open
Deike	801			Open
Deike	801			Open
Deike	801			Open

Listing of Individuals Requiring Evacuation Assistance

None known at this time

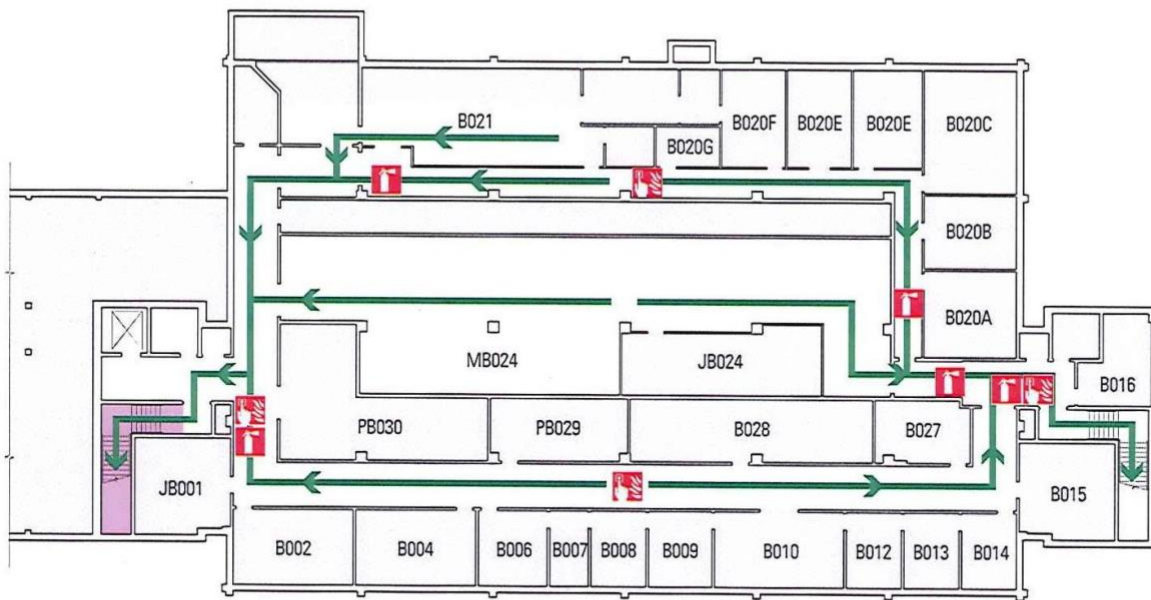
Provide the following information:

- Name
- Work Area
- Special Needs/Concerns

Building Evacuation Floor Plans



EVACUATION ROUTE



- ← Exit Route
- 🚒 Fire Alarm
- 🧯 Fire Extinguisher
- 🟫 Assisted Evacuation Staging Area

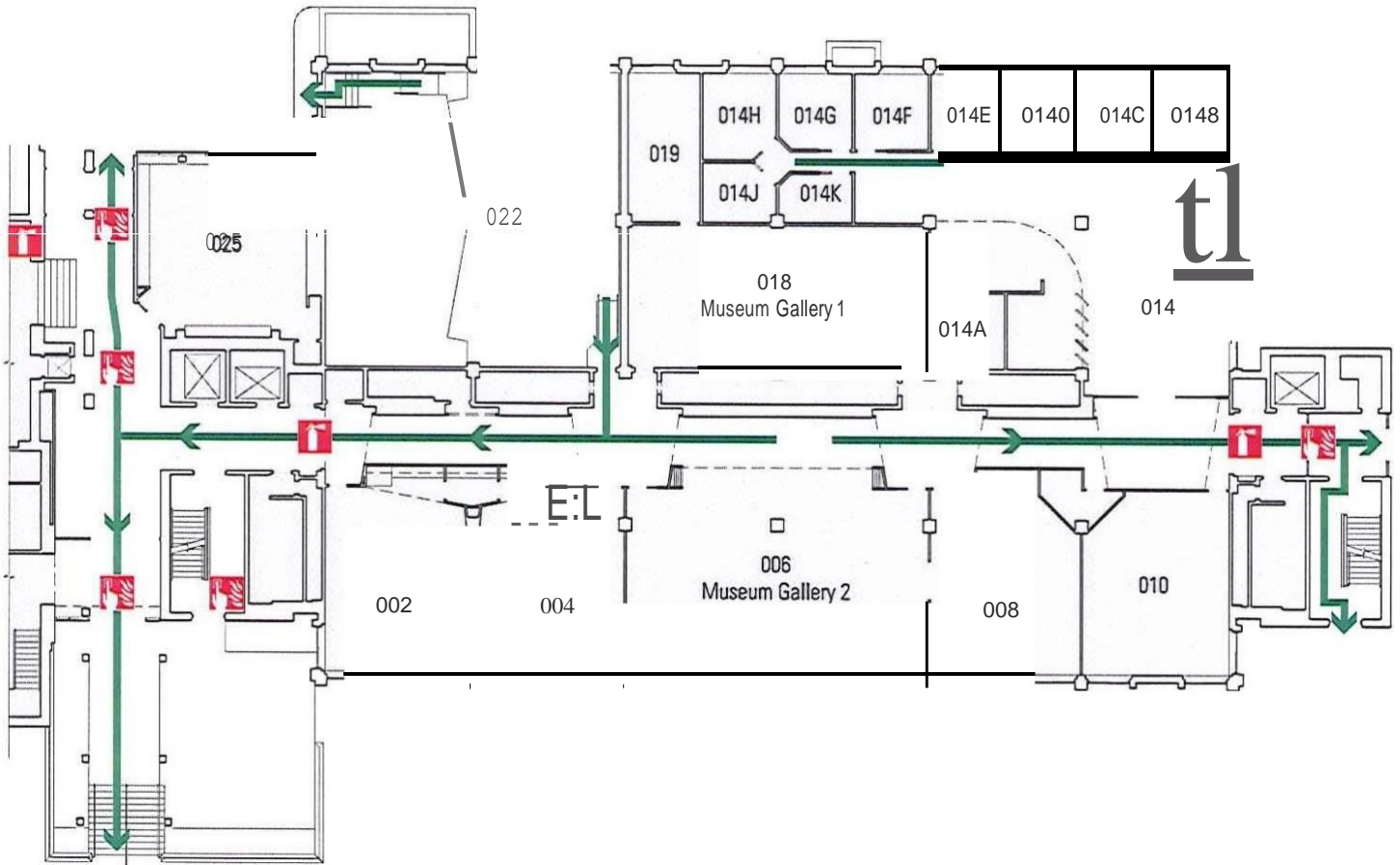
DESIGNATED MEETING SITE
IST Ramp



Deike Building - Basement



EVACUATION ROUTE



- + - Exit Route
- Fire Alarm
- li Fire Extinguisher

DESIGNATED MEETING SITE

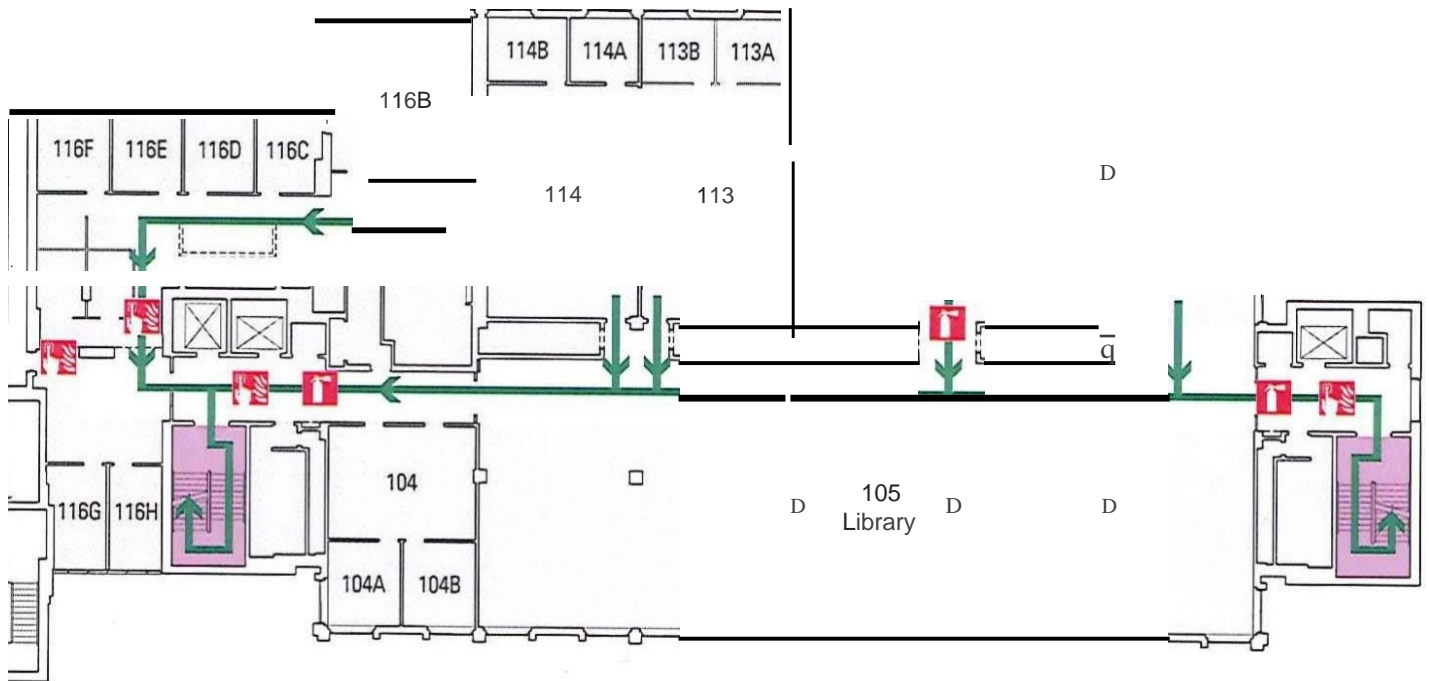
1ST Ramp



Deike Building - Ground Floor



EVACUATION ROUTE



+ - Exit Route

Fire Alarm

Ii Fire Extinguisher

Assisted Evacuation Staging Area

DESIGNATED MEETING SITE

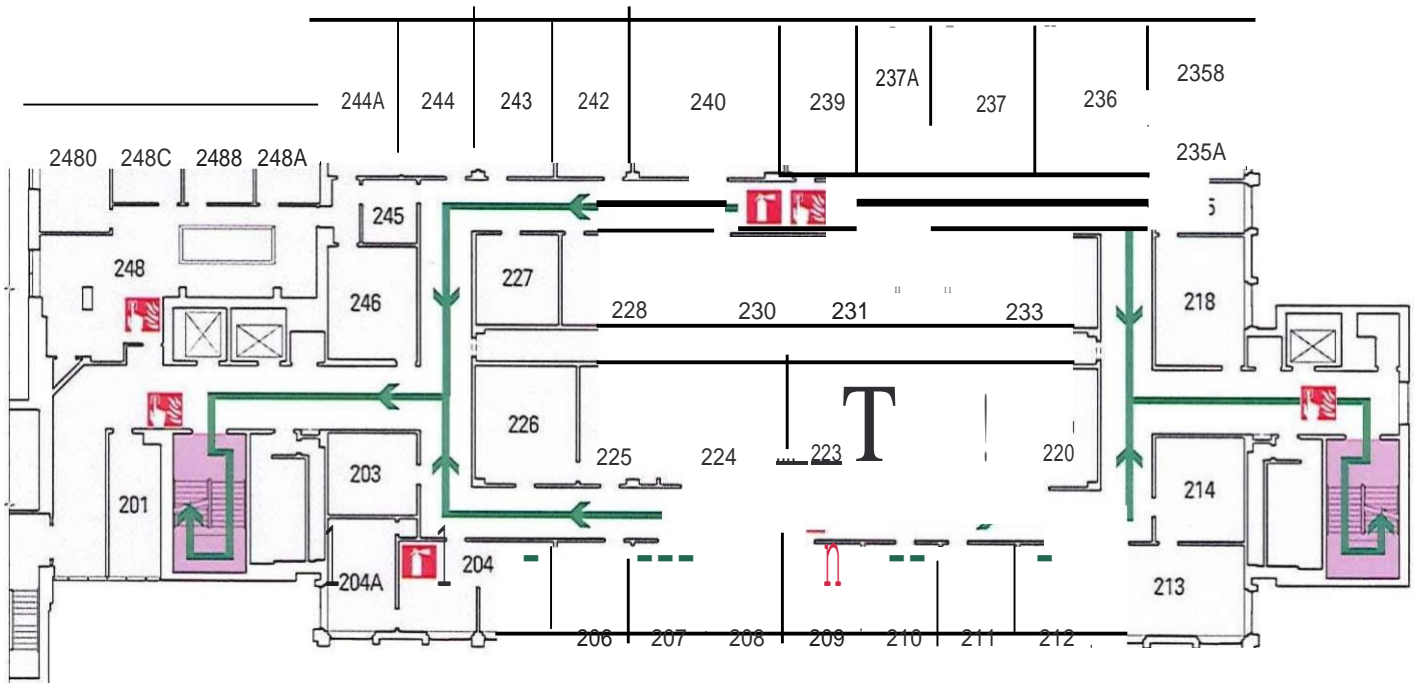
1ST Ramp



Deike Building - 1st Floor



EVACUATION ROUTE



+ - Exit Route

Fire Alarm

Ii Fire Extinguisher

Assisted Evacuation Staging Area

DESIGNATED MEETING SITE

1ST Ramp

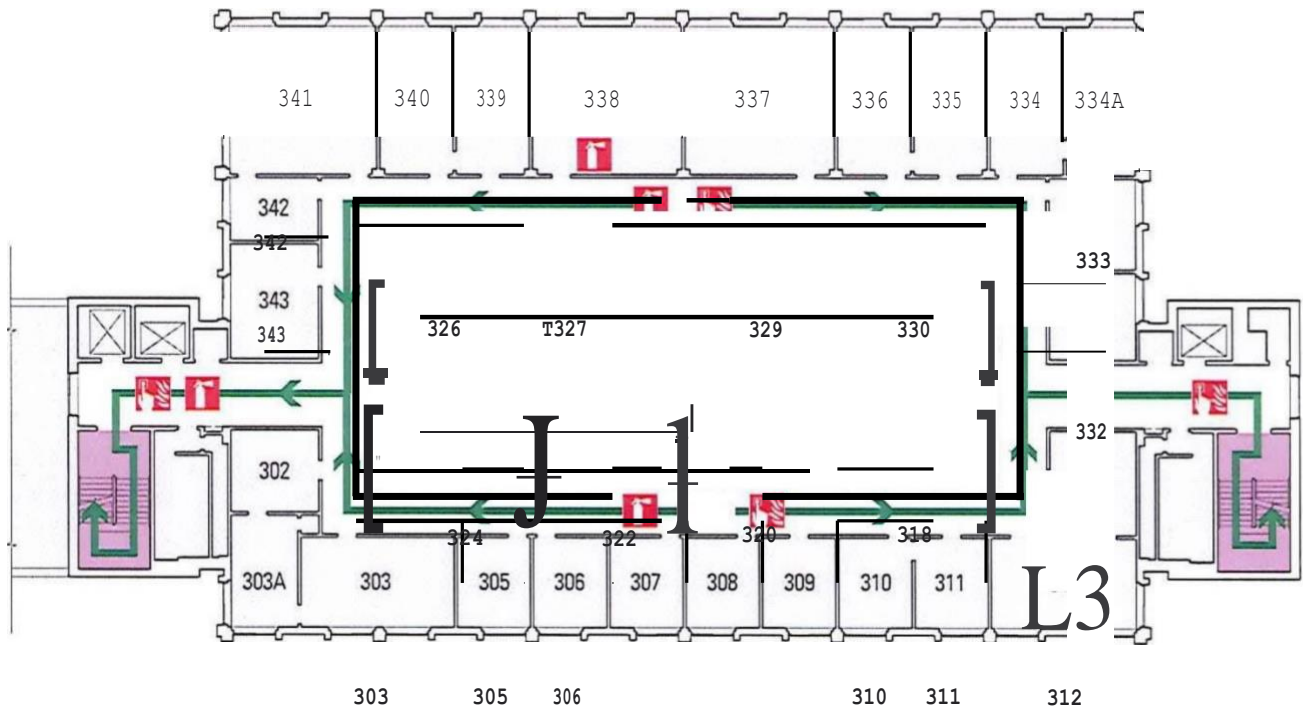
PENNS STATE



Deike Building - 2nd Floor



EVACUATION ROUTE



Exit Route

Fire Alarm

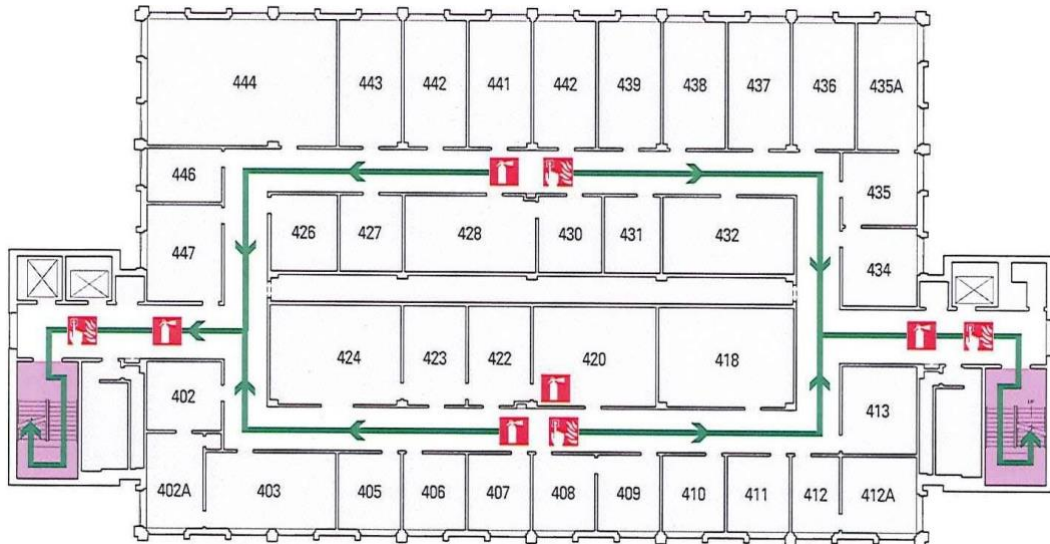
I] Fire Extinguisher

Assisted Evacuation Staging Area

DESIGNATED MEETING SITE

1ST Ramp

EVACUATION ROUTE



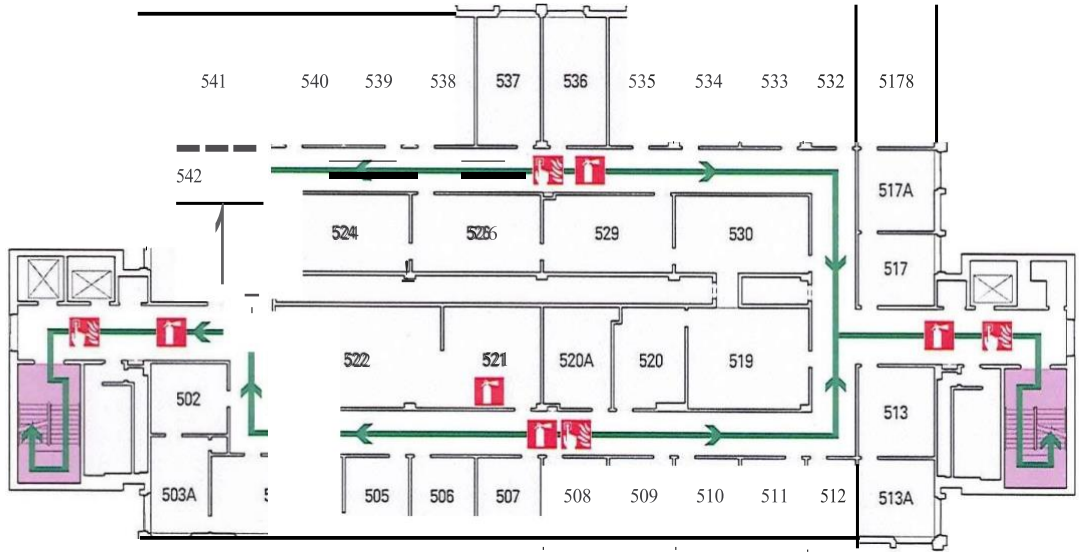
- ExitRoute
- Fire Alarm
- fj Fire Extinguisher
- Assisted Evacuation Staging Area

DESIGNATED MEETING SITE
1ST Ramp

PENNE.TE

Deike Building - 4th Floor

EVACUATION ROUTE



+ - Exit Route

Fire Alarm

Fire Extinguisher

Assisted Evacuation Staging Area

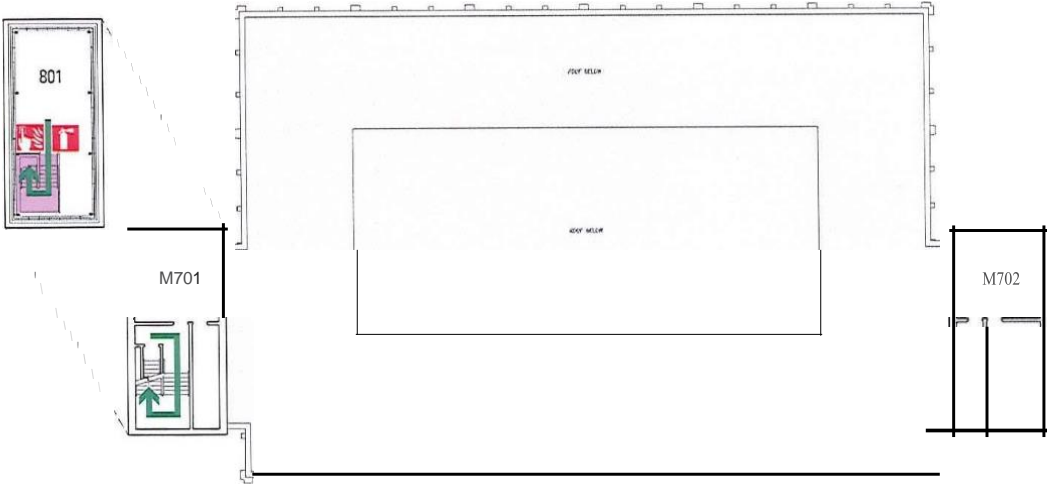
DESIGNATED MEETING SITE

ISTramp

PENN. TE

Deike Building - 5th Floor

EVACUATION ROUTE



- + Exit Route
- Fire Alarm
- iii Fire Extinguisher
- Assisted Evacuation Staging Area

DESIGNATED MEETING SITE
1ST Ramp

PENN. STATE

Deike Building - 8th Floor

Evacuation Quick Reference Card

Emergency Contacts:

911 (Police- Fire –Ambulance)
University Police: 863-1111Environmental
Health and Safety: 865-6391
OPP Work Reception Center: 865-4731

Evacuation Contacts:

Bldg / Dept Emergency Coordinator:
Dennis Walizer: 863-2023
Safety Monitor: _____

Work Unit Name

Evacuation Quick Reference
- Quickly exit in a calm manner.
- Close doors – **Do Not** lock
- Assist visitors to evacuate
- **Do Not** use elevators
- Report to designated meeting site
- **Do Not** reenter the building until advised by
emergency personnel or safety monitor

Deike Building designated meeting site:
Westgate Bldg. Ramp East